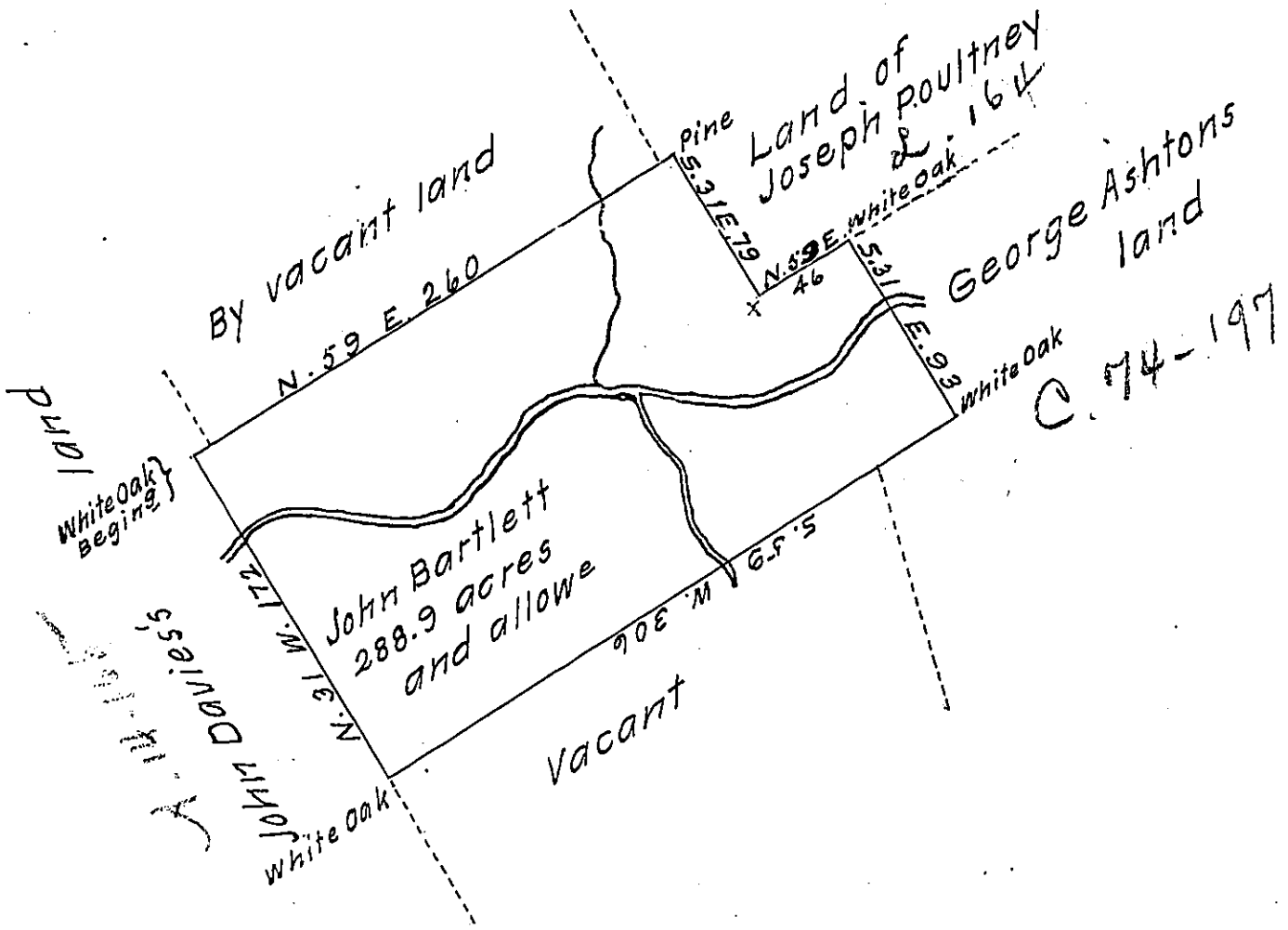


FORM NO. 1.



The draught of a tract of land called Bartlettsburg situate on the Warriours Path on the heads of the Bald Eagle Creek on the South Side of the Nittany Mountain in the County of Cumberland containing two hundred eighty eight acres 153 perches with the usual allowance of six acres 7/8 cent. for roads. Surveyd the 13<sup>th</sup> day of June Anno Dom. 1768, in pursuance of an order of survey to John Bartlett bearing date at Philad<sup>a</sup> the 4<sup>th</sup> day of August Anno Dom. 1766 and numbered 739.

W<sup>m</sup> Maclay D.S.

To John Lukens Esq<sup>r</sup> S.G. }  
of Pennsylvania }

IN TESTIMONY that the above is a copy of the original remaining on file in the Department of Internal Affairs of Pennsylvania, made conformably to an Act of Assembly approved the 16th day of February, 1833, I have hereunto set my Hand and caused the Seal of said Department to be affixed at Harrisburg, this twelfth day of January 1912

*Henry Houck*  
Secretary of Internal Affairs.